

Helpman LEX 14-7

Specifications

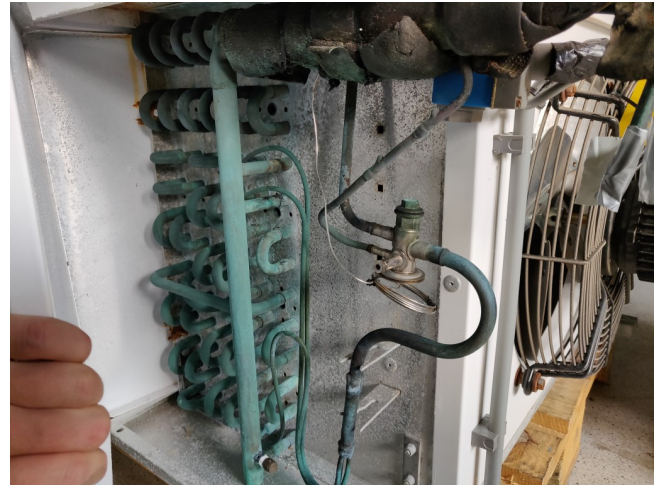
La marque	Helpman
Type	LEX 14-7
Capacité kW	6
Réfrigérant	Freon
Nombre de ventilateurs	1
Espace Fan in mm	7
Dégivrage	None
m ³ /h	3.540
Tailles	970x692x710mm
Remarques	6kW at 8K // based on R404A // YOB 2012
Volume	8 dm ³
Poids	46kg
Stock	1



Description

Used Helpman LEX 14-7

Used helpman LEX 14-7 · Size 970x692x710mm (LxWxH) · Weight: 46Kg · Fin space: 7 · m³/h: 3.540 · Fans: 1 · Hertz fans: 50Hz · refrigerant R404A · **All components of this used evaporator will be tested on good working, leak free condition (electro engines), coils, bearings) Choosing HOSBV means buying with warranty. We perform a industrial cleaning and rust spots will be covered. Also, we can arrange your shipment.



type BH

Alfa Laval EOOD
1298 Sofia (BG), Treboch,
with yard 52, 1/1-588, 590
Tel: +359 2 421 98 80, Fax: +359 2 936 25 92

Type	LEX 14-7 230		
Serial Number	SA-1202-0500003703-10207-27696		
Refrigerant	R22/R134A/R404A/R401B/R407C/R417A/R507A		
Operating temp (TS)	-55/63	°C min/max	Voltage 230/50/1
Design Pressure (PS)	-1/25	Bar min/max	Year 2012
Total internal volume	8.0	L	
Weight (empty)	46	Kg	CE



Blow Through Unit Coolers 1.5 - 40 kW **LEX**

Cooler type	Dimensions mm								Shipp. m ³	Cooler weight		Coil surface		Int. vol. dm ³	Refrig. conn.	
	A	B	D	F	G	H	K	kg		kg	4 mm	7 mm	inlet		suction	
LEX 2-*	598	412	485	385	-	380	380	0.3	18	17	7.7	4.7	2.1	1/2"	1/2"	
LEX 4-*	698	472	495	395	-	430	440	0.3	22	21	11.2	6.7	3.0	1/2"	1/2"	
LEX 6-*	698	472	805	503	-	430	440	0.3	27	25	16.8	10.1	4.0	1/2"	1/2"	
LEX 8-*	798	602	840	503	-	505	570	0.6	38	35	26.1	15.7	6.0	1/2"	22 mm	
LEX 10-*	1105	820	495	395	-	430	880	0.5	38	32	22.4	13.5	6.0	1/2"	22 mm	
LEX 12-*	1105	820	605	503	-	430	880	0.5	42	38	33.6	20.2	6.8	1/2"	28 mm	
LEX 14-*	999	682	712	503	-	650	590	0.9	50	46	25.2	21.2	8.0	1/2"	28 mm	
LEX 16-*	1110	792	750	520	35	675	750	0.7	55	51	34.4	27.2	10.4	1/2"	28 mm	
LEX 18-*	1480	1180	890	520	35	500	1140	1.0	71	65	52.2	31.4	11.6	1/2"	35 mm	
LEX 20-*	1540	1350	710	520	35	600	1320	1.3	95	88	70.9	42.4	15.5	1/2"	35 mm	
LEX 22-*	1880	1550	750	520	35	675	1520	1.7	130	111	92.8	55.9	20.4	1/2"	42 mm	
LEX 24-*	1880	1550	950	530	110	825	1520	2.2	139	128	119.0	69.8	28.2	1/2"	42 mm	
LEX 26-*	2650	2328	750	520	35	675	2290	2.3	172	159	159.8	84.2	30.9	1/2"	54 mm	
LEX 28-*	2950	2528	825	630	110	825	2290	3.0	202	186	174.7	105.2	39.9	1/2"	54 mm	
LEX 30-*	3450	3098	825	630	110	825	3050	3.9	278	256	232.7	140.1	51.1	1/2"	54 mm	

Cooler type	Fans / Electric Defrost				Fans 50 Hz				Electric defrost						
	number	diameter mm	air volume m ³ /h	air throw m	number	diameter mm	air volume m ³ /h	air throw m	nominal power W	absorbed power W	number of elements	coil	drispray	reduced power kW	
LEX 2-*	1	254	1020	1060	10	48	30/80	30/85	1	1	1	1	1.28	-	
LEX 4-*	1	355	1480	1570	12	50	30/100	30/100	1	1	1	1	1.76	-	
LEX 6-*	1	355	1420	1560	12	50	30/100	30/100	2	1	1	1	2.64	-	
LEX 8-*	1	355	2490	2620	15	53	70/150	90/145	2	1	1	1	3.2	-	
LEX 10-*	2	305	2970	3130	15	53	30/100	30/100	1	1	1	1	3.2	-	
LEX 12-*	2	355	2960	3010	15	53	30/100	30/100	2	1	1	1	4.8	-	
LEX 14-*	1	406	3360	3540	15	57	70/230	90/215	1	1	1	1	4.5	3.4	
LEX 16-*	1	457	4430	4650	20	60	220/260	250/400	5	1	6.0	2	1	5.4	4.5
LEX 18-*	2	355	4980	5240	20	56	70/160	90/145	2	1	1	1	5.4	4.5	
LEX 20-*	2	406	6730	7080	20	60	70/230	90/215	5	1	8.4	5	1	8.4	6.3
LEX 22-*	2	457	8600	9120	20	63	220/260	250/400	5	1	13.2	5	1	13.2	9.9
LEX 24-*	2	508	11000	11600	20	66	220/260	250/400	5	1	13.2	5	1	13.2	9.9
LEX 26-*	3	457	13000	14000	20	66	220/260	250/400	5	1	19.2	5	1	19.2	14.4
LEX 28-*	3	508	16600	17500	20	68	220/260	250/400	5	1	19.2	5	1	19.2	14.4
LEX 30-*	4	508	22200	23400	20	68	220/260	250/400	10	2	24.0	10	2	24.0	18.0

